

实用 MBBS 教学

全英文 教案示例

主 编 梁红敏 李红宾 刘晓蕾 程 欣
副主编 赵子茵 杜开利 尹竹萍 马 敬



云南出版集团
云南科技出版社

图书在版编目 (C I P) 数据

实用 MBBS 教学全英文教案示例 / 梁红敏等主编.
— 昆明 : 云南科技出版社, 2022. 6
ISBN 978-7-5587-4190-6

I. ①实… II. ①梁… III. ①医学教育—教案 (教育)—留学生—医学院校 IV. ①R4-5

中国版本图书馆 CIP 数据核字 (2022) 第 060829 号

实用 MBBS 教学全英文教案示例

SHIYONG MBBS JIAOXUE QUAN YINGWEN JIAOAN SHILI
梁红敏 李红宾 刘晓蕾 程欣 主编

出版人: 温翔
策划: 高亢
责任编辑: 赵敏
封面设计: 长策文化
责任校对: 秦永红
责任印制: 蒋丽芬

书号: ISBN 978-7-5587-4190-6
印刷: 昆明理焯印务有限公司
开本: 889mm×1194mm 1/16
印张: 23.75
字数: 670千字
版次: 2022年6月第1版
印次: 2022年6月第1次印刷
定价: 86.00元

出版发行: 云南出版集团 云南科技出版社
地址: 昆明市环城西路 609 号
电话: 0871-64192481



版权所有 侵权必究

编委会

主 编：梁红敏 李红宾 刘晓蕾 程 欣

副主编：赵子茵 杜开利 尹竹萍 马 敬

编 委 (按姓氏笔画排列)：

丁妮娜 王雪维 王 静 庆开雄

刘卓慧 刘怡希 刘寅强 汪 成

李 青 李 娜 李 航 柳汝明

张 弢 钟庆华 杨正慧 杨昆蓉

杨 荻 胡 娟 顾 华 凌冰冰

唐 坤 唐俊婷 黄章翔 谢晓洁

曾子珣 董 苑 董俊杰 雷小光

戴 南 谭 漾 樊文星



Teaching Plan

Kunming Medical University



School	the First Affiliated Hospital of Kunming Medical University	Department	Department of Traditional Chinese Medicine		
Course Name	Traditional Chinese Medicine	Class	Large class		
Teacher	Yang Kunrong	Professional Title	Attending doctor	Teaching Hour	1 Hour
Teaching Topic (chapter)	Diagnostic Methods / Chapter 5 Inspection (Tongue diagnosis) / Section 1				
Textbook (Title, chief editor, publishing house, publishing Date, Version)	Title: Traditional Chinese Medicine Chief Editor: Chen Jinshui Publishing House: People's Medical Publishing House Publishing Date: August 2018, 9th edition				
<p>1. Teaching objectives</p> <p>Through this course, students will be able to :</p> <ul style="list-style-type: none"> (1) describe normal tongue manifestation; (2) know corresponding relations between tongue and zang-viscera fu-viscera; (3) understand the principle of Tongue diagnosis and Clinical significance; (4) see the clinical significance of Tongue diagnosis. <p>Cultural values:</p> <p>Tongue diagnosis is one of the characteristics of TCM diagnosis. Through the study of this</p>					

chapter, students will establish a perceptual understanding of the "Tongue diagnosis", and then feel the broad and profound Chinese medical culture, as well as the medical ethics of "Virtual of Great Physician", and assist to cultivate medical humanistic cultivation of medical students.

1. Teaching focus, difficult points and the solutions

(1) Teaching focus:

1) Normal Tongue manifestation;

2) Corresponding relations between Tongue and zang-viscera fu-viscera.

【Teaching design】 Let the students observe each other's tongue image in pairs, so that they can get the most intuitive impression. Then introduce some common tongue pictures through slides, and ask them which pictures belong to normal tongues and which belong to abnormal tongues, so as to stimulate students' interest in learning and enter learning with questions. And then introduce the description of the normal tongue – "light-red tongue body with a thin, white, moderately moist coating", and show the picture of the normal tongue; Then explain the corresponding relations between Tongue and zang-viscera fu-viscera, method, content and steps of tongue diagnosis.

(2) Difficult points : The principle of Tongue diagnosis.

【Solutions】 1) Introduce meridian images to explain corresponding relations between Tongue and zang-viscera fu-viscera, in other words, the tongue represents the external signals of the meridians and viscera, therefore, tongue inspection is an important part of syndrome differentiation; 2) In the class, pictures and oral clinical cases are combined to arouse students' interest in learning. Teach the students to distinguish the tongue image according to

the western medicine they have learned, such as typical "white greasy coating", "yellow greasy coating" and other sick coating; 3) In order to make it easy for students to learn, blackboard design would include as many pictures and clinical examples as possible.

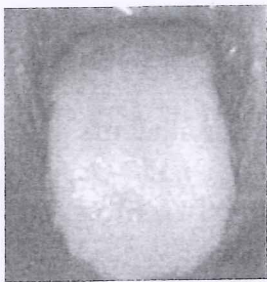
Teaching method

1. Multi-media and blackboard writing: the background of multimedia is based on Traditional Chinese medicine, so that students can feel "sense of involvement". Some life examples will be used in the guided lectures, so that students could have a perceptual understanding.
2. Interact with students as much as possible in class, study together.
3. Use visual, intuitive, concise slide in the courseware instead of long and many text description, so that students can easily understand and remember the medical knowledge.
4. Combined with their own clinical experience, explain with examples, make the teaching vivid, help students to understand and master.

Key points of multimedia and blackboard design

1. Traditional Chinese medicine is used as multimedia background, it reflects the characteristics of traditional culture, text as concise as possible, key points clearly marked.
2. Slides with pictures and a little intuitive and simple words, with traditional Chinese medicine characteristics.
3. Blackboard design with key words, so that students can learn easily.

Teaching contents	Teaching design	Student activities	Time
1. Introduce	The pictures are visual	Students think	3min

<p>Show a tongue pictures through slides to students, and ask them if the picture shows a normal tongue. And if it is an abnormal tongue, what kind of disease might produce such a tongue.</p>	<p>and down-to-earth. Students are easy to accept the content of this class.</p>	<p>and answer the questions.</p>	
<p>2. Questions</p> <p>(1) As a doctor of TCM, how to inspect the tongue.</p> <p>(2) What is the corresponding relations between Tongue and zang-viscera fu-viscera?</p> <p>(3) What does a normal tongue look like?</p>	 <p>the students observe each other's tongue image in pairs, so that they can get the most intuitive impression.</p>		<p>2min</p>
<p>3. Teaching objectives</p> <p>(1) describe normal tongue manifestation;</p> <p>(2) know corresponding relations between tongue and zang-viscera fu-viscera;</p>	<p>visually show the key points of teaching.</p>	<p>Combine the teaching material, make clear the key point in the lesson.</p>	<p>1min</p>

(3) understand the principle of Tongue Inspection and Clinical significance;

(4) see the clinical significance of Tongue Inspection.

4. Teaching contents

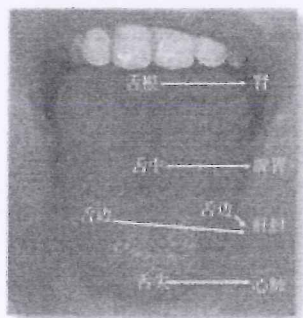
(1) normal tongue – “light-red tongue body with a thin, white, moderately moist coating”

(2) corresponding relations between tongue and zang-viscera fu-viscera

1) How to observe the rise and fall of zang-viscera fu-viscera qi and blood by observing the tongue?

2) How do the heart, liver, spleen, lungs and kidneys correspond to the tongue?

Result: the tongue tip reveals the pathological changes of heart and lung; the middle of tongue reveals



according to the guide of the slide, point out the localization of the viscera of the tongue image one

listen and record what them learned.

2min

5min

that of spleen and stomach, the tongue root reveals that of kidney.

(3) Explain the principle of Tongue Inspection

1) Show the anatomical structure of the tongue, and tell students the relationship between the meridians and the tongue.

2) Introduce meridian images, for example:

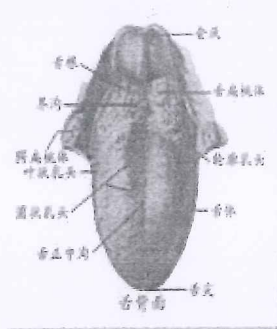
Spleen---- foot Tai Yin Spleen Meridian connects to the root of the tongue and disperses under the tongue.

Result: Tongue diagnosis could reflect the spleen's functions of transportation and transformation, and the production of qi and blood.

(4) Contents of Tongue Inspection

by one

the anatomical structure of the tongue



foot Tai Yin Spleen Meridian



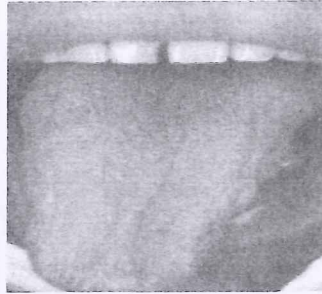
learning together

5min

5min

1) tongue body

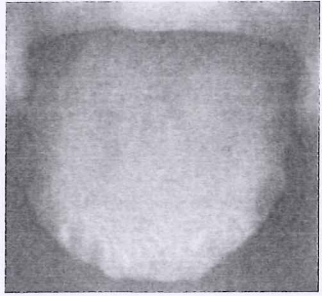
Show some different pictures of tongue



5min

2) coating on the tongue

yellow greasy coating



6min

Watery slippery coating

5. the clinical significance of

Tongue Inspection

(1) Judging condition of healthy qi and pathogenic qi.

(2) Telling degree of disease.

(3) Differentiating nature of

<p>pathogenic.</p> <p>(4) Inferring alleviation or deterioration of disease.</p> <p>(5) Estimating prognosis.</p> <p>6. Summary</p> <p>(1) normal tongue – “light-red tongue body with a thin, white, moderately moist coating”</p> <p>(2) corresponding relations between tongue and zang-viscera fu-viscera: the tongue tip reveals the pathological changes of heart and lung; the middle of tongue reveals that of spleen and stomach, the tongue root reveals that of kidney.</p>	<p>【 Design 】 Multimedia display of teaching content.</p> <p>【 Introduction 】 Start with the tongue image of a clinical case and teach the clinical significance of looking at the tongue.</p> <p>Repeat the learning of key point in class.</p>		<p>2min</p> <p>4min</p>
<p>Questions, homework</p>	<p>How to describe normal tongue manifestation?</p>		

	What's the clinical significance of Tongue diagnosis?
preview	Contents of 'listening and smelling' and 'interrogation'
Implementation and analysis	<p>The teaching effect of this class is to be evaluated from the following aspects: 1. Feedback on students' learning effects, including questions for review in the next class and quizzes in class; 2. Peer evaluation; 3. Guidance of teaching and Research Office.</p> <p>We will improve the problems in time so that we can do well in the following courses.</p>
Review opinions of The Teaching and Research Office:	<p>The teaching focuses are prominent, the courseware is exquisite, the characteristics of Traditional Chinese medicine are highlighted, the clinical examples are abundant, the students have high interest in learning, teaching and learning benefits each other, and they can complete the course teaching well.</p> <p style="text-align: right;">Director's Signature:</p> <p style="text-align: right;">Date:</p>